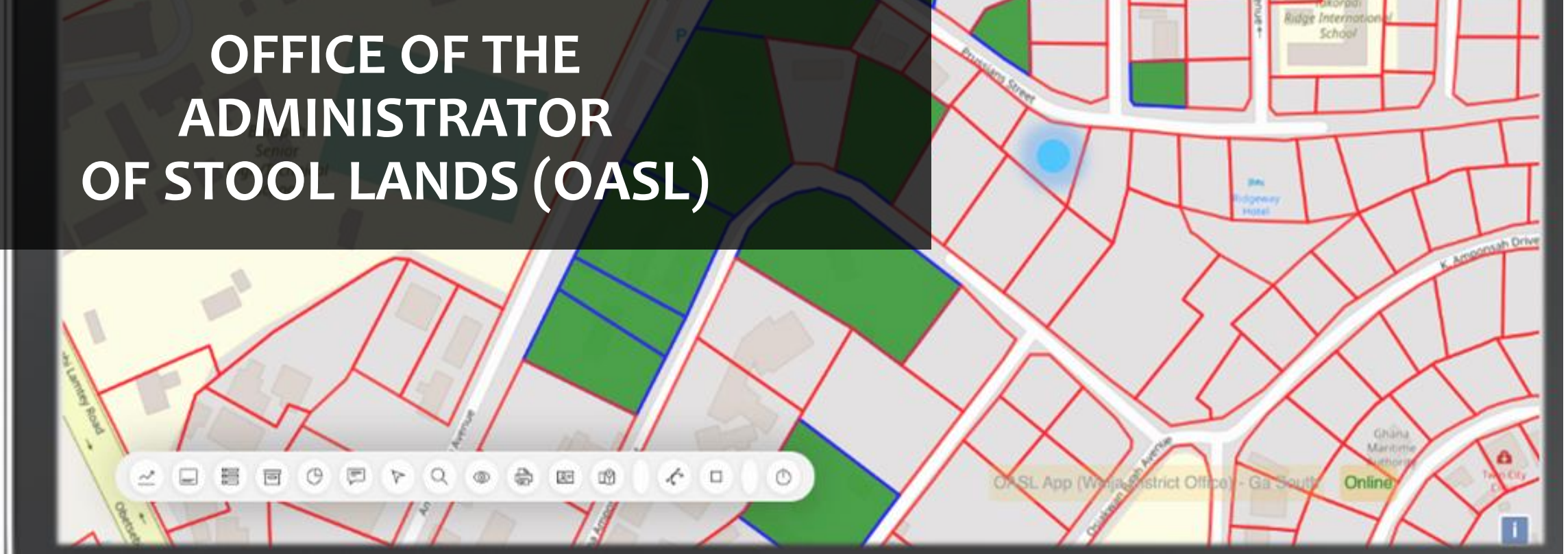


# OFFICE OF THE ADMINISTRATOR OF STOOL LANDS (OASL)

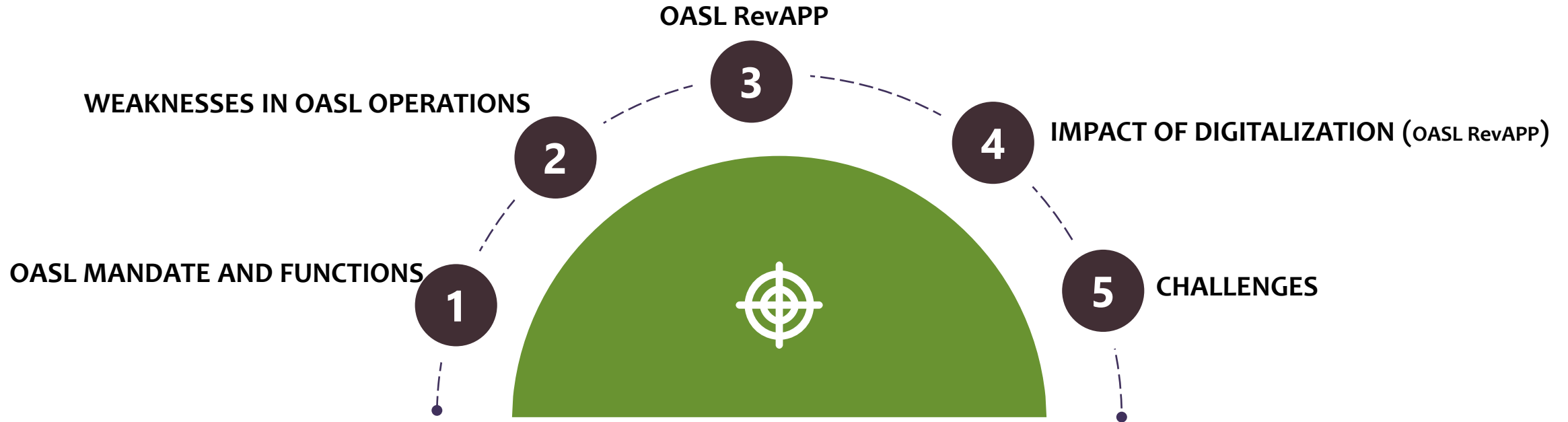


Presentation by: Surv. Atsu Norgbedzi

## OASL RevAPP

DATA DRIVEN CITIES CONFERENCE | NAIROBI – KENYA 12-13.02.2024

# ORDER OF PRESENTATION



# OASL MANDATE & FUNCTIONS



## OASL LEGAL FRAMEWORK

- **ARTICLE 267 OF THE 1992 CONSTITUTION**
- **OFFICE OF THE ADMINISTRATOR OF STOOL LANDS ACT 1996 ACT 481**
- **OASL REGULATION 2019, LI2377**



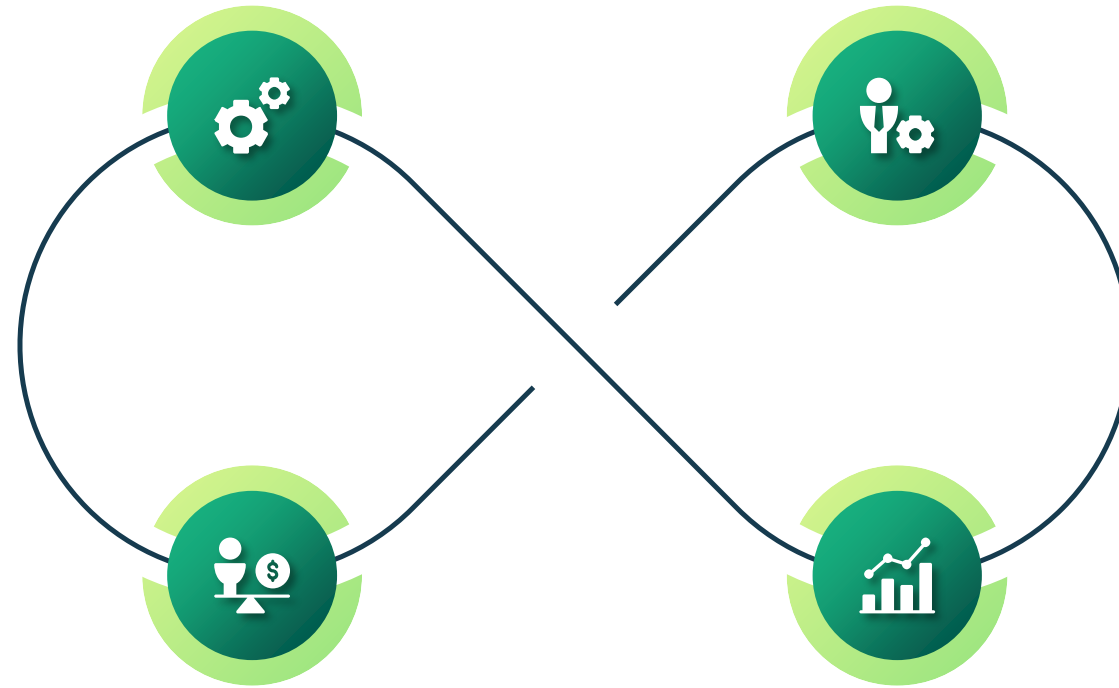
## THESE LAWS MANDATE THE OFFICE TO PERFORM A NUMBER OF ROLES

- **COLLECT STOOL LAND REVENUE**
- **DISBURSE SAME TO STATED BENEFICIARIES**
- **PROMOTE SUSTAINABLE CUSTOMARY LAND ADMINISTRATION**

# STATE OF EXECUTION OF MANDATE

**1**  
Data collection and management were manually done

**2**  
Data processing and billing were manually done, and personnel driven

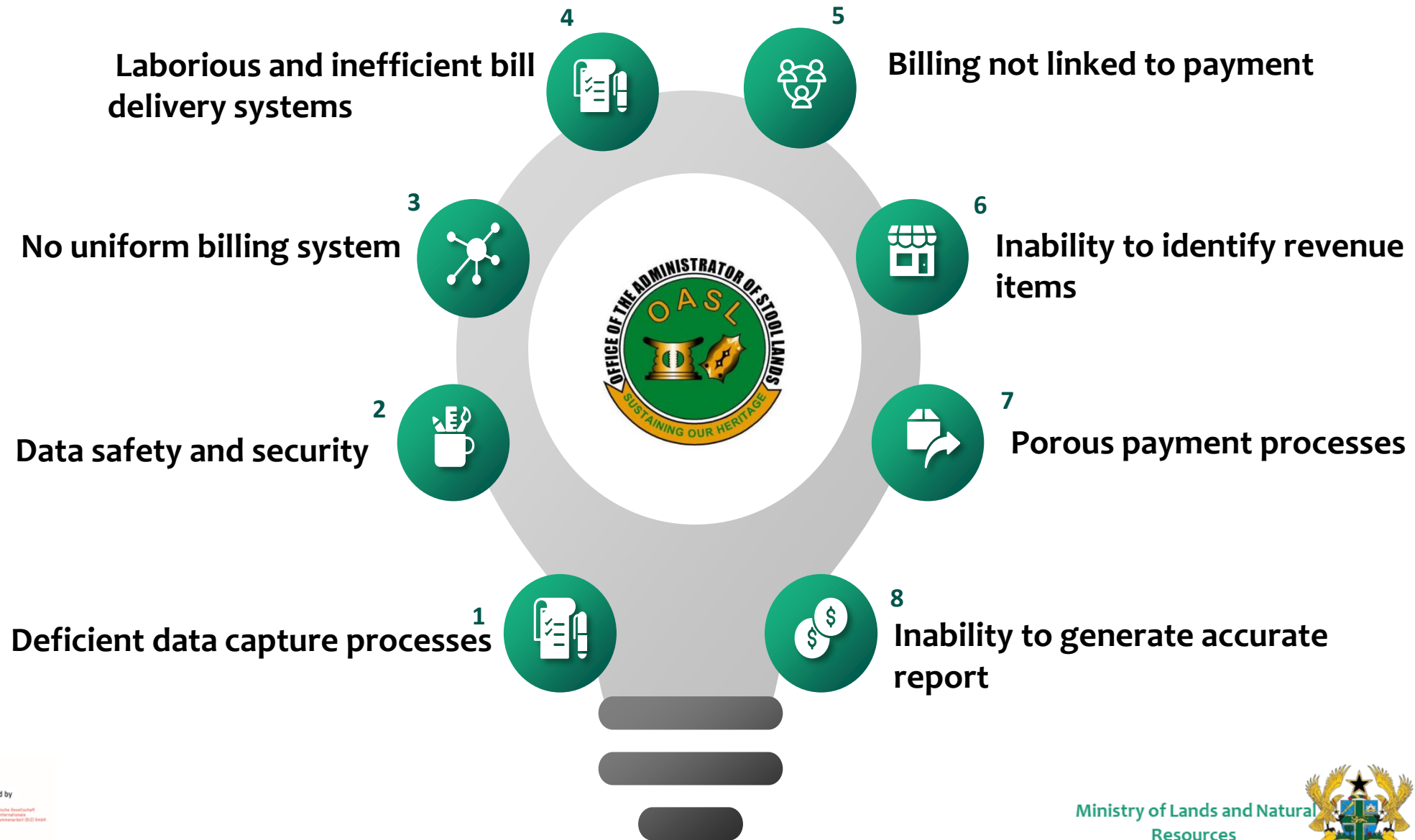


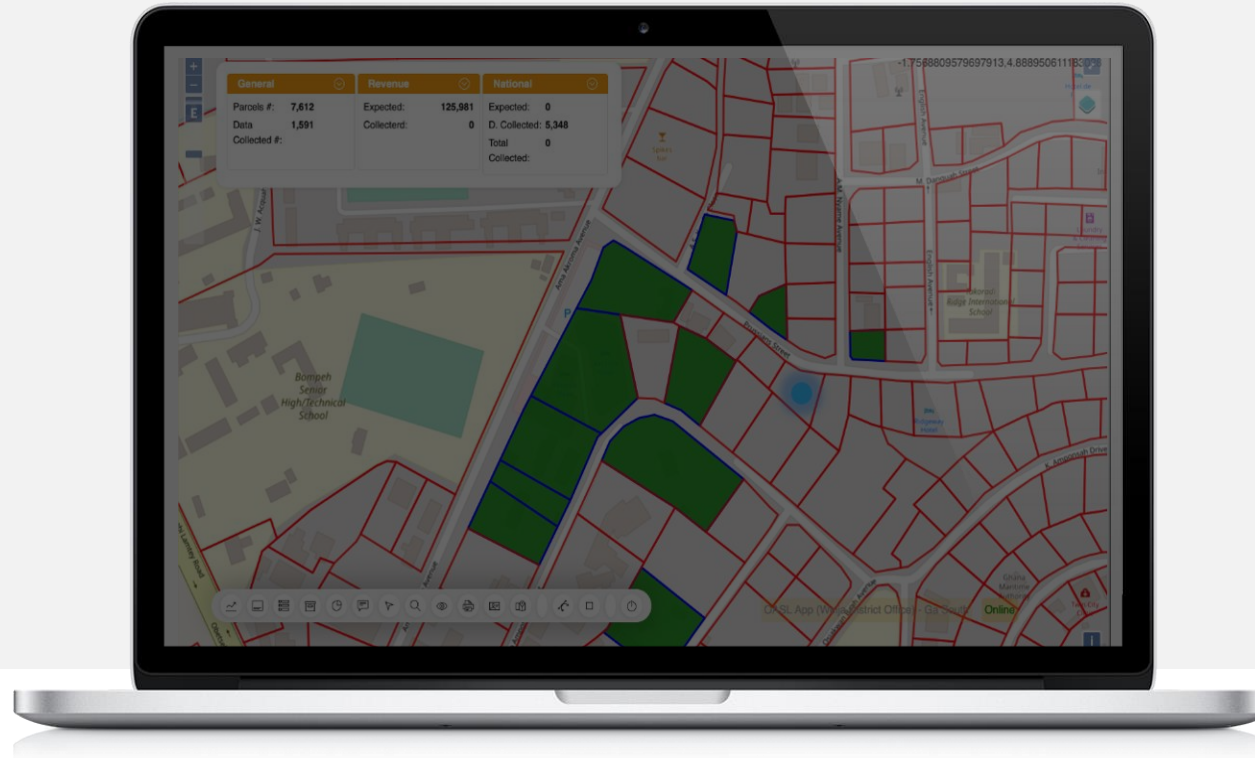
**3**  
Payment processes were manual, cash driven and exposed to manipulation

**4**  
Unavailability of data to inform policy choices and planning



# WEAKNESSES IN THE OASL OPERATIONS





# The OASL RevApp

Web Based Application

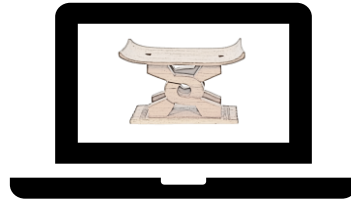


E



**GRA**  
RENT TAX APP

E



**OASL RevApp**



**Spatial/Urban  
Planning**



**RENT CONTROL  
APP**

**dLRev**  
*Data for more...*



**Area Navigator**  
Route with Ease



**Service Delivery**  
Health, Security, Fire Service



**MAPPING  
ENGINE**  
Data for Better  
Planning

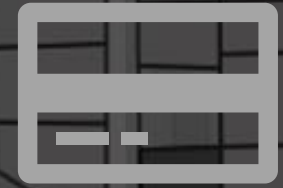


**SMART CITY  
APPS**  
Data for Better Planning

# FUNCTIONALITIES



Data  
Collection  
and  
Management



Electronic  
Billing  
&  
Payment



Enhanced  
&  
Feedback  
System





# Office of the Administrator of Stool Lands (OASL)

Select an option from below to make payment, view details of your land, or request for a assistance for customer service personnel to assist you

## Make Payment

Make payment for your property

[Pay Here](#)

## Property Status

Check the status of your property.

[Check status](#)

## Need Assistance

Provide your details for assistance.

[Request assistance](#)



Implemented by  
**giz**  
Deutsche Gesellschaft  
für Internationale  
Zusammenarbeit (GIZ) GmbH



# IMPACT OF DIGITALIZATION (OASL RevAPP)

Improved Efficiency  
in Data Capture

Expanded Coverage  
of Bill Distribution

Improvement In  
Revenue Collected  
in 2023



Convenient Billing  
Processes

Centralized Data  
Repository

Number of Projects  
being Funded with  
Stool Land Revenue  
have increased

# CHALLENGES



**Poor Internet  
connectivity in  
some Districts**



**Absence Of  
Spatial Maps in  
some Locations**



**Change  
Management**



# THANK YOU

Address: P.O.Box CT 3076, Cantonments, Accra

Website: [stoollands@oasl.gov.gh](mailto:stoollands@oasl.gov.gh)

Tel: +233 030 267 4160 or +233 030 267 4159

RevApp: [https://oasl.dlrev.org/oasl\\_portal](https://oasl.dlrev.org/oasl_portal)



Implemented by:

